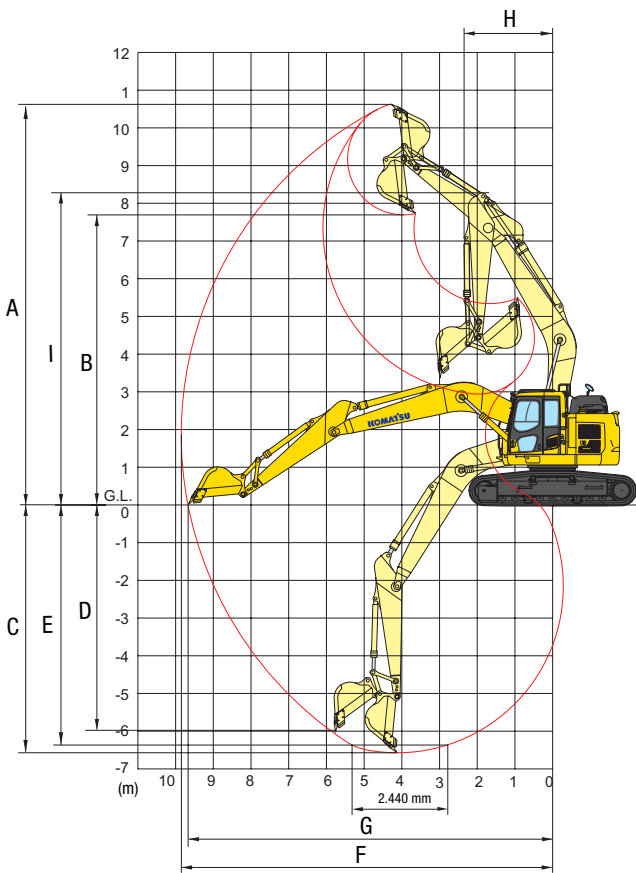




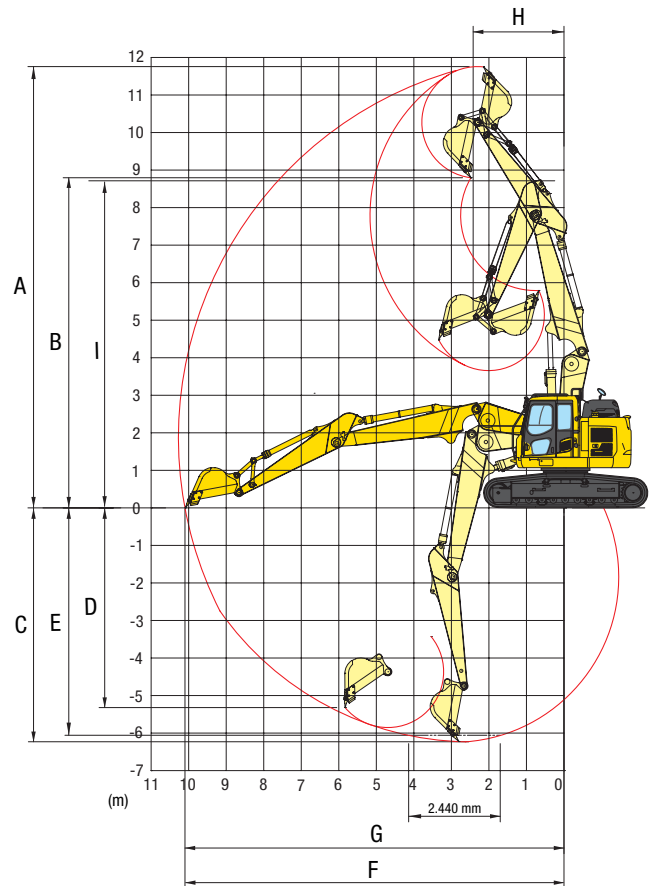
## Komatsu PC228USLC-11

20 Ton Excavator Hire | 20 Ton Excavator Sales

### MONO BOOM



### TWO-PIECE BOOM



### WORKING RANGE

|  | MONO BOOM |           | TWO-PIECE BOOM |           |
|--|-----------|-----------|----------------|-----------|
|  | 2,4 m     | 2,9 m     | 2,4 m          | 2,9 m     |
| Arm length                                   | 2,4 m     | 2,9 m     | 2,4 m          | 2,9 m     |
| A Max. digging height                        | 10.380 mm | 10.700 mm | 11.305 mm      | 11.790 mm |
| B Max. dumping height                        | 7.470 mm  | 7.825 mm  | 8.380 mm       | 8.830 mm  |
| C Max. digging depth                         | 6.095 mm  | 6.620 mm  | 5.725 mm       | 6.225 mm  |
| D Max. vertical wall digging depth           | 5.315 mm  | 5.980 mm  | 4.750 mm       | 5.350 mm  |
| E Max. digging depth of cut for 2,44 m level | 5.840 mm  | 6.370 mm  | 5.535 mm       | 6.050 mm  |
| F Max. digging reach                         | 9.395 mm  | 9.875 mm  | 9.775 mm       | 10.270 mm |
| G Max. digging reach at ground level         | 9.205 mm  | 9.700 mm  | 9.595 mm       | 10.095 mm |
| H Min. swing radius                          | 2.700 mm  | 2.310 mm  | 2.570 mm       | 2.370 mm  |
| I Max. height at min. swing radius           | 8.340 mm  | 8.250 mm  | 8.735 mm       | 8.755 mm  |