

# RIDGWAY Rentals



PLANT RENTAL • HAULAGE • SALES • PARTS • SERVICE

01691 770171 0800 515155

sales@ridgwayrentals.com www.ridgwayrentals.com



## Komatsu PW98 - Rubber Duck

### LIFTING CAPACITY

A – Reach from swing centre

B – Height at bucket pin

🔧 – Rating over front

🔧 – Rating over side

DATAS AND SPECIFICATIONS ARE REFERRING TO THE MACHINE ACCORDING TO 89/392/CE AND EN 474-5 DIRECTIVES.

When removing bucket, linkage or cylinder, lifting capacities can be increased by their respective weights.

Lifting capacities with additional counterweight (218 kg), 750 mm bucket (200 kg), twin tyres (8.25-20), blade, levers and cylinder.

#### WITH FRONT BLADE AND REAR STABILISERS UP

B	A	Max.		6,0 m		5,0 m		4,0 m	
		🔧	🔧	🔧	🔧	🔧	🔧	🔧	🔧
Arm length 1,650 mm	4,5 m			1.005	756	*1.479	1.098	*1.610	*1.610
	3,0 m	848	564	1.005	713	1.403	954	1.988	1.404
	1,5 m	825	540	930	672	1.305	840	1.725	1.176
	0,0 m	867	570	987	683	1.283	882	1.722	1.170
Arm length 1,900 mm	4,5 m			980	731	*1.479	1.073	*1.610	*1.610
	3,0 m	798	514	980	688	1.378	929	1.963	1.379
	1,5 m	800	515	905	647	1.280	815	1.700	1.151
	0,0 m	817	520	962	658	1.258	857	1.697	1.145

#### WITH REAR BLADE DOWN (LIFTING ON BLADE)

B	A	Max.		6,0 m		5,0 m		4,0 m	
		🔧	🔧	🔧	🔧	🔧	🔧	🔧	🔧
Arm length 1,650 mm	4,5 m			1.566*	836	1.479*	1.159	1.610*	1.610*
	3,0 m	1.566*	559	1.653*	776	1.940*	1.121	2.471*	1.549
	1,5 m	1.549*	551	1.909*	728	2.249*	965	2.975*	1.253
	0,0 m	1.626*	557	2.004*	728	2.204*	984	2.975*	1.240
Arm length 1,900 mm	4,5 m			1.456*	932	1.479*	1.175	1.610*	1.610*
	3,0 m	1.442*	525	1.618*	789	1.918*	1.136	2.371*	1.616
	1,5 m	1.470*	529	1.792*	686	2.232*	917	2.971*	1.346
	0,0 m	1.470*	534	1.846*	700	2.187*	945	2.971*	1.333

#### WITH FRONT BLADE AND REAR STABILISERS DOWN

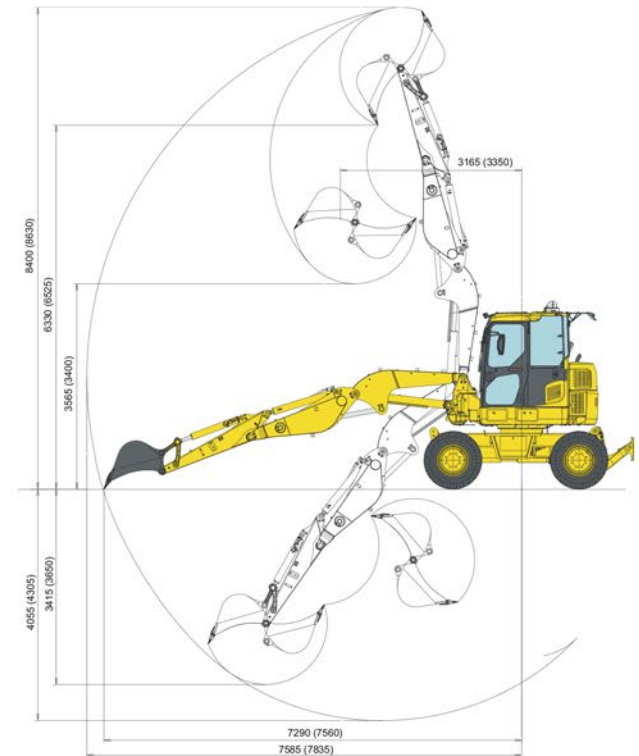
B	A	Max.		6,0 m		5,0 m		4,0 m	
		🔧	🔧	🔧	🔧	🔧	🔧	🔧	🔧
Arm length 1,650 mm	4,5 m			1.566*	1.118	1.479*	1.479*	1.610*	1.610*
	3,0 m	1.566*	824	1.653*	975	1.940*	1.342	2.471*	2.067
	1,5 m	1.549*	852	1.909*	993	2.249*	1.264	2.975*	1.823
	0,0 m	1.626*	861	2.004*	993	2.204*	1.289	2.975*	1.804
Arm length 1,900 mm	4,5 m			1.456*	1.050	1.479*	1.479*	1.610*	1.610*
	3,0 m	1.442*	746	1.618*	1.058	1.918*	1.422	2.371*	2.371*
	1,5 m	1.470*	795	1.792*	990	2.232*	1.307	2.971*	1.935
	0,0 m	1.470*	803	1.846*	1.010	2.187*	1.346	2.971*	1.916

#### NOTE:

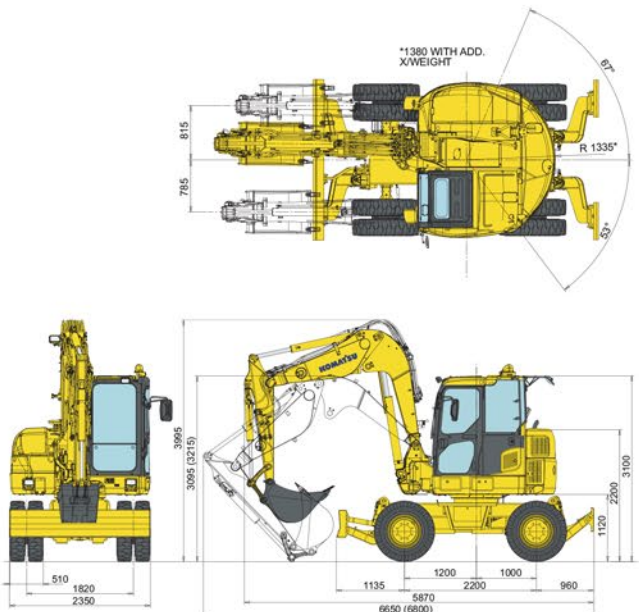
Ratings are based on ISO standard 10567. Rated loads do not exceed 87% of hydraulic lift capacity or 75% of tipping load. Excavators used in object handling operations must comply with the related local regulations and must be equipped with hose burst valves (boom & arm) and an overload warning device in compliance with EN474-5.

- The values marked with an asterisk (\*) are limited by the hydraulic capacities
- Calculations are based on the machine resting on a uniform and firm surface
- The lifting point is a hypothetical hook placed behind the bucket.

### WORKING RANGE



### DIMENSIONS



Bucket capacity (ISO 7451)	m <sup>3</sup>	0,077	0,109	0,181	0,235	0,282
Bucket width (without cutting edge)	mm	350	450	550	650	750
Bucket width (with cutting edge)	mm	450	550	650	750	825